

INSIDE THIS BULLETIN

www.EDDOG.org, info@EDDOG.org

- 1 What's EDDOG?
Update: We've got land!
- 2 Next steps
What can you do?

What's EDDOG & why should I care?

El Dorado Dog Owners Guild (EDDOG) is a non-profit 501(c)3 chartered to develop one or more off-leash dog parks in El Dorado County, where well-behaved canine citizens can socialize and exercise in a clean, safe environment without endangering or annoying people, property or wildlife.

EDDOG works with local governing bodies, such as the Community Services Districts, to not only build dog parks, but to educate the dog-owning community about how these facilities should be used for the betterment of our canine and human residents.

Why should you care? Well, if you're a dog owner, you probably know there's nothing more convenient and fun than an off-leash dog park (provided everyone knows the rules and etiquette...a story for another time). Not only do our dogs benefit from the physical exercise, but as productive canine citizens at the dog park, they're getting invaluable socialization experiences. Un- or ill-socialized dogs end up in shelters because they're unpredictable around other dogs or people.

The off-leash dog park, if visitor-managed properly, can help dog owners address the issues that comprise 85% of dog behavior problems.

Land approved for dog parks in Cameron Park and El Dorado Hills

After more than 3 years of concerted efforts on the part of EDDOG volunteers, we are thrilled to announce that Cameron Park and El Dorado Hills Community Services Districts each have allocated city land for the exclusive use as off-leash dog parks!

The dog park slated for El Dorado Hills will comprise a total of 2 acres located at the north end of Community Park adjacent to the soccer field at El Dorado Hills Blvd. and St Andrews Dr. The park will feature separate areas for small and large dogs. *See map next page.*

The Cameron Park CSD has designated a half-acre in Hacienda Park, located at the northeast corner of Cameron Park Drive and Hacienda Drive. *See photo next page.*

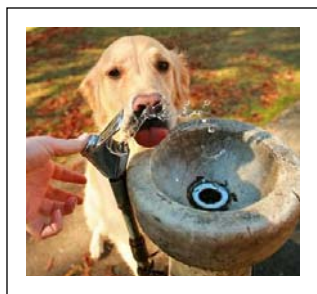
Although land has been designated, it is important that EDDOG maintain visibility by going to monthly meetings or special planning meetings as appropriate with the respective CSDs. The old saw about the squeaky wheel definitely applies here!



Making Friends

A calm and friendly meet-and-greet.

The off-leash dog park, if visitor-managed properly, can help dog owners address the issues that comprise 85% of dog behavior problems.



*A quick hydration break
Then back to the fun!*

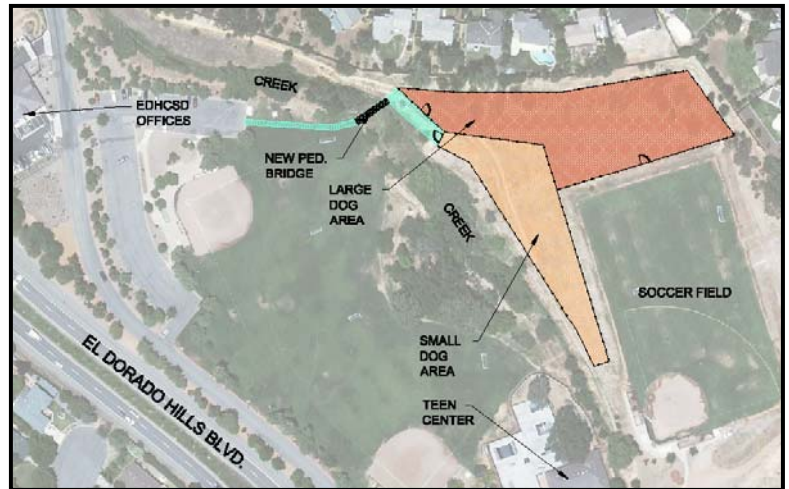
Next steps: fundraising

Before we can even guess at a groundbreaking date for either the El Dorado Hills or Cameron Park projects, EDDOG must be able to show the community's support by - you guessed it - generating some funds.

Here's a snapshot of some of the estimated costs associated with the have-to-haves of building the dog parks, according to the CSD:

El Dorado Hills

- \$3.5K to assess compliance with Fish & Game
- \$20K for special-use permits with the various governmental agencies
- An unknown amount for an ADA-compliant bridge from the parking lot to the dog park area.



Future home of your off-leash dog park in El Dorado Hills

If we can show good faith by raising \$25K over the next couple of months, Dianna Hillyer, Planning Director for the EDH CSD, said it could be as early as May 2010 that we are able to break ground. She also said that the longest part of the process is satisfying the various governmental agencies by attaining permits, environmental impact studies, etc.

Once we satisfy all the legalities, the Grand Opening date will be driven by how quickly we can raise the funds needed to actually build the park.



Future home of your off-leash dog park in Cameron Park

Cameron Park

EDDOG's agreement with the CP CSD states that if we can raise half the park's building costs - an estimated \$20K - the CSD will break ground.

Based on general industry standards, it can cost as much as \$100K to build a dog park. Rest assured we'll be doing everything we can to offset costs by obtaining donations of materials whenever possible. We have a long road ahead of us. And by "us" we're hoping we mean you, too!

What can you do?

- Make a tax-deductible* donation. EDDOG is a non-profit, 501(c)3 institution.
- Buy a Brick - help beautify the EDH and CP dog parks with a custom-made brick, a visible (and tax deductible!*) tribute from your family or business to those special canines in your life.
- Take a shift at the EDDOG booth at one of the upcoming Farmer's Markets in EDH Town Center this summer
- Invite your friends to a Dog Park Meet-Up Fundraiser
- Students - earn your community service hours by helping with a variety of projects
- Attend our meetings and volunteer your knowledge and time. Our pack gathers the first Wednesday of the month at the Nugget Market (in upstairs lounge area) at 6:30pm.



Show your business and family support at the dog park with a personalized brick. Commemorate your canine!

For more information, please contact us at:

info@EDDOG.org

Or see our website: www.EDDOG.org

*Tax situations vary. Consult your financial advisor.